

RetroLite

Corporation of America

Manufacturers of Energy Efficient, Low Maintenance Lighting Products



**320 JACKSONVILLE ROAD HATBORO, PA 19040
TOLL FREE PHONE 888-717-3688 / FAX 215-675-9004**

RETROLITER® SEAL TIGHT ENERGY EFFICIENT, LOW MAINTENANCE LIGHTING FIXTURES

**DUST AND VAPOR TIGHT - U.L. LISTED FOR WET LOCATIONS
NSF APPROVED HOUSING**

Typical applications:

Dairy barns, swine and poultry houses, equestrian arenas
Food processing plants
Commercial and institutional kitchens
Parking garages
Exterior undercave lighting

Fixture lengths: 2 foot, 4 foot and 8 foot.

Features that cut maintenance costs:

Fiberglass reinforced polyester enclosure body and acrylic diffuser protect inner fixture by sealing out corrosive gases and moisture.

Clear crepe pattern diffusers are made of high impact acrylic/DR material to withstand potential damage from shipping, pressure washing and handling during routine maintenance.



Continuous poured polyurethane gasket has no butt seam to separate. Unlike neoprene, its ability to seal is not affected by age.



Non metallic, easy action retaining latches lock diffuser firmly in place to make a positive seal with the enclosure body.

Features that provide superior performance:

Electronic ballasts with high power factor and low harmonic distortion provide maximum energy savings and 0° F. ambient temperature start.

Electromagnetic ballasted models are offered for use when lower initial cost is more important than energy savings. An optional premium ballast specifically designed for 34 watt, T12 lamps maximizes both light output and lamp life.

Specular reflectors for one lamp 4' and two lamp 8' fixtures boost light levels by over 40%.



THE RETROLITE STORY

RetroLite Corporation of America was established in 1982 to develop, manufacture and market **energy saving, low maintenance lighting products**. In the same year, the company produced one of the first U. L. listed compact fluorescent screw-in adapters in the United States.

Soon after, in addition to a variety of retrofit conversion kits, **RetroLite** offered compact fluorescent lighting fixtures for **commercial and residential applications**. With the ability to make **custom products** or to modify standard ones for **special situations**, its **energy efficient lighting** was installed in many types of facilities. These included schools, nursing homes, apartment and office buildings, churches and public parks.

In 1992, RetroLite initiated its line of **vaportight lighting fixtures**. Originally developed for and sold to the animal confinement industry, namely swine, dairy and poultry, other markets are being actively pursued. The U. L. listed, wet locations fixtures have proven their ability to **survive frequent pressure washdowns**, a corrosive ammonia atmosphere and low voltage conditions.

RetroLite's lighting products are assembled in its **Hatboro, Pennsylvania** plant from **quality components**. **Our philosophy** is to produce lighting fixtures that have the **longest possible useful life**. If, from time to time, replacement parts are needed, they are readily available from us for almost every item we manufacture. **We constantly work** to maintain **our reputation** for **high quality products, responsive customer service and innovation**.

“If you choose a RetroLite lighting fixture, you can have confidence in your decision.”

Richard L. Karton, President
RetroLite Corporation of America

RETROLITER[®] EASY INSTALLATION

Features that make installation easier:



- Fixture ends have open holes for 1/2" conduit. Installer does not waste time with knockouts and can use a single connector to secure through outer enclosure and inner fixture. Plugs are provided to seal unused holes.



- Optional stainless steel mounting brackets for chain hanging, flush ceiling installation or corrugated ceiling installation eliminate the need for drilling through the enclosure. This method avoids a potential source for water leakage.



- Easy mount ballast covers with 1/4 turn fasteners.



- Bulk packaging for large jobs reduces the volume of material requiring disposal at the installation site. Optional pivot ends for the inner fixture rotate and lock into place. There is no need to attach lampholders or end plates, so considerable time is saved for the installer.

RETROLITER® HIGH LIGHT OUTPUT SEAL TIGHT FLUORESCENT FIXTURE

**GIVES 51% MORE LIGHT FOR ONLY 8% MORE ENERGY
COMPARISON WITH MAGNETIC BALLASTED FIXTURE
FOR TWO 34 WATT T12 LAMPS**

	HIGH LIGHT OUTPUT TWO 32 WATT T8 XP LAMPS	STANDARD LIGHT OUTPUT TWO 34 WATT T12 LAMPS	INCREASE
SYSTEM LUMENS	7200	4752	51.5%
LAMP LIFE	24,000 HOURS	20,000 HOURS	20%
INPUT WATTS	78	72	8%

**FOUR FOOT FULLY ASSEMBLED FIXTURE FOR TWO F032T8 LAMPS
WIDE BODY**



Catalog Number	Description	Input Watts	Voltage	Amps
232E-HLO-CVP-W	Electronic ballast, snap on ballast cover, 0° F. starting temperature.	78	120	.67

Optional Features:

Mounting - Stainless steel brackets allow fixture to be attached to minor ribs of corrugated ceiling.
Catalog Number: 2SSB CVP-W

Voltage – 277 volts
Catalog Number: Add 277 to end of fixture catalog number.

Ballast Cover - Easy mount ballast cover with ¼ turn fasteners.
Catalog Number: EMBC

Bulk Pack Version

The fixture listed above is available bulk packed in multiples of 60 fixtures. Packaging is, 6 inner fixtures per carton; 30 diffusers per carton; 60 enclosure bodies per carton.
Catalog Number: Add BP to end of fixture catalog number.

Assembly Required by Installer:

Slide the prewired lamp holders onto the mounting brackets. Snap on end plates. Attach inner fixture to outer enclosure body studs. All fasteners are provided, and all holes are knocked out at the factory.

Pivot End Option:

Pivot ends have prewired lampholders mounted. Installer simply rotates ends into locked position to complete inner fixture assembly. Catalog Number: Add BPPE to fixture catalog number instead of BP.

Warranty:

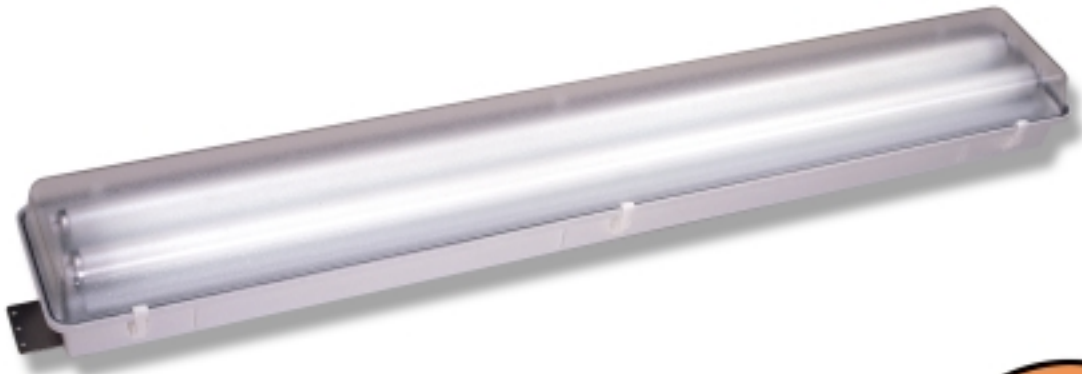
Fixture	2 YEARS
Lamps	3 YEARS (XP Type if ordered with fixture, 2 years for 700 or 800 series lamps)
Ballast	5 YEARS

RETROLITE CORPORATION OF AMERICA / HATBORO, PA 19040
Manufacturers of energy efficient, low maintenance lighting products Since 1982
TOLL FREE PHONE 888-717-3688 / PHONE 215-443-9370 / FAX 215-675-9004

RETROLITER® SEAL TIGHT 4' FULLY ASSEMBLED FLUORESCENT FIXTURE FOR TWO 34 WATT T12 LAMPS

WIDE BODY

Catalog Number	Description	System Lumens	Input Watts	Voltage	Amps
240 CVP-W	Electromagnetic ballast, snap on ballast cover, 60°F. starting temperature, High impact acrylic/DR diffuser.	4752	72	120	.73



OPTIONAL FEATURES:

Mounting - Stainless steel brackets allow fixture to be attached to minor ribs of corrugated ceiling.
Catalog number – 2SSB CVP-W

Ballast - Premium model for increased light output and lamp life.
Catalog number – 240PB CVP-W



System Lumens	Input Watts	Voltage	Amps
5130	75	120	.64

Ballast Cover - Easy mount ballast cover with ¼ turn fasteners.

Voltage – 277 volts
Catalog Number: Add 277 to end of fixture catalog number.

Bulk Pack Version

The fixture listed above is available bulk packed in multiples of 60 fixtures. Packaging is, 6 inner fixtures per carton; 30 diffusers per carton; 60 enclosure bodies per carton.
Catalog Number: Add BP to end of fixture catalog number.

Assembly Required by Installer:

Slide the prewired lamp holders onto the mounting brackets. Snap on end plates. Attach inner fixture to outer enclosure body studs. All fasteners are provided, and all holes are knocked out at the factory.

Pivot End Option:

Pivot ends have prewired lampholders mounted. Installer simply rotates ends into locked position to complete inner fixture assembly. Catalog Number: Add BPPE to fixture catalog number instead of BP.

Warranty –

Fixture – 2 years
Lamps - 1 year (if ordered with fixture)
Ballast - 3 years

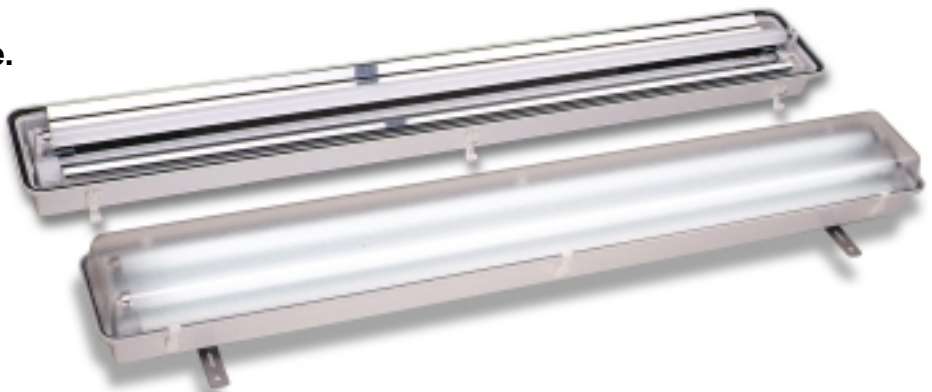
RETROLITE CORPORATION OF AMERICA / HATBORO, PA 19040
Manufacturers of energy efficient, low maintenance lighting products Since 1982
TOLL FREE PHONE 888-717-3688 / PHONE 215-443-9370 / FAX 215-675-9004

**RETROLITER® SEAL TIGHT 4'
FLUORESCENT LIGHTING FIXTURES
NARROW BODY
FULLY ASSEMBLED WITH ELECTRONIC BALLAST
FOR 32 WATT T8 LAMPS**

Catalog Number	Description	System Lumens By Lamp Series		Input Watts	Voltage	Amps
		700	800			
232E CVP-N	Two Lamp Fixture.	5040	5310	59	120	.50
T232E CVP-N	Tandem two lamp fixtures, one ballast operates four lamps.	10080	10620	114	120	.97
32E CVP-N-R	One lamp fixture with reflector.	2520	2655	30	120	.26
T32E CVP-N-R	Tandem one lamp fixtures with reflectors. One Ballast operates two lamps.	5040	5310	59	120	.50

STANDARD FEATURES:

- 0° F. ambient starting temperature.
- Easy mount ballast cover.
- High impact acrylic/DR diffuser



OPTIONAL FEATURES:

Mounting - Stainless steel mounting brackets for chain hanging or flush ceiling installation.

Catalog Number: 2SSB CVP-N for single fixture
4SSB CVP-N for tandem fixtures

Voltage – 277 volts

Catalog Number: Add 277 to end of fixture catalog number.

Bulk Pack Version:

The fixtures listed above are available bulk packed in multiples of 30 single fixtures or 15 tandem fixtures. Packaging is, 6 inner fixtures per carton; 30 diffusers per carton; 30 enclosure bodies per carton. **Catalog Number:** Add BP to end of fixture catalog number.

Assembly Required by Installer:

Slide the prewired lamp holders onto the mounting brackets. Snap on end plates. Attach inner fixture to outer enclosure body studs. All fasteners are provided, and all holes are knocked out at the factory.

Warranty:

Fixtures: 2 years
Lamps: 2 years
(if ordered with fixtures)
Ballast: 5 years

Pivot End Option:

Pivot ends have prewired lampholders mounted. Installer simply rotates ends into locked position to complete inner fixture assembly.
Catalog Number: Add BPPE to fixture catalog number instead of BP.

RETROLITER® SEAL TIGHT 4' FLUORESCENT LIGHTING FIXTURES WIDE BODY FULLY ASSEMBLED WITH ELECTRONIC BALLAST FOR 32 WATT T8 LAMPS

Catalog Number	Description	System Lumens by Lamp Series		Input Watts	Voltage	Amps
		700	800			
232E CVP-W	Two Lamp Fixture. Snap on ballast cover.	5040	5310	59	120	.50
T232E CVP-W	Tandem two lamp fixtures, one ballast operates four lamps. Snap on ballast covers.	10080	10620	114	120	.97
32E CVP-W-R	One lamp fixture with reflector. Easy mount ballast cover.	2520	2655	30	120	.26
T32E CVP-W-R	Tandem one lamp fixtures with reflectors. One ballast operates two lamps. Easy mount ballast covers.	5040	5310	59	120	.50

STANDARD FEATURES:

0° F. ambient starting temperature.
High impact acrylic/DR diffuser.



Optional Features:

Mounting - Stainless steel brackets allow fixture to be attached to minor ribs of corrugated ceiling.
Catalog Number: 2SSB CVP-W

Voltage – 277 volts
Catalog Number: Add 277 to end of fixture catalog number.

Ballast Covers - Easy mount ballast covers with ¼ turn fasteners.
Catalog Number: EMBC

Bulk Pack Version

The fixtures listed above are available bulk packed in multiples of 60 single fixtures or 30 tandem fixtures. Packaging is, 6 inner fixtures per carton; 30 diffusers per carton; 60 enclosure bodies per carton.
Catalog Number: Add BP to end of fixture catalog number.

Assembly Required by Installer:

Slide the prewired lamp holders onto the mounting brackets. Snap on end plates. Attach inner fixture to outer enclosure body studs. All fasteners are provided, and all holes are knocked out at the factory.

Pivot End Option:

Pivot ends have prewired lampholders mounted. Installer simply rotates ends into locked position to complete inner fixture assembly. Catalog Number: Add BPPE to fixture catalog number instead of BP.

Warranty

Fixtures	2 YEARS
Lamps	2 YEARS (If ordered with fixtures)
Ballast	5 YEARS

RETROLITE CORPORATION OF AMERICA / HATBORO, PA 19040
Manufacturers of energy efficient, low maintenance lighting products Since 1982
TOLL FREE PHONE 888-717-3688 / PHONE 215-443-9370 / FAX 215-675-9004

RETROLITER® SEAL TIGHT 2' FLUORESCENT LIGHTING FIXTURES

NARROW BODY

FULLY ASSEMBLED WITH ELECTRONIC BALLAST FOR 40 WATT T5 HIGH LUMEN COMPACT FLUORESCENT LAMP

Catalog Number	Description	System Lumens	Input Watts	Voltage	Amps
40BE CVP-N	One lamp fixture.	3024	39	120	.335
T40BE CVP-N	Tandem one lamp fixtures. One ballast operates two lamps.	6048	75	120	.640

STANDARD FEATURES:

0° F. ambient starting temperature.
High impact acrylic/DR diffuser



Optional Features:

Mounting -Stainless steel mounting brackets for chain hanging or flush ceiling installation.

Catalog Number: 2SSB CVP-N for single fixture
4SSB CVP-N for tandem fixtures

Voltage – 277 volts

Catalog Number: Add 277 to end of fixture catalog number.

Warranty:

Fixtures 2 years

Lamps 2 years (if ordered with fixtures)

Ballast 5 years

**RETROLITER® SEAL TIGHT 8'
FLUORESCENT LIGHTING FIXTURES
NARROW BODY
FULLY ASSEMBLED WITH ELECTRONIC BALLAST
FOR T8 LAMPS**

Catalog Number	Description	System Lumens by Lamp Series		Input Watts	Voltage	Amps
		700	800			
264E CVP-N	For four 32 watt lamps.	10080	10620	114	120	.97
T64E CVP-N	Tandem two lamp fixtures for 32 watt lamps. One ballast operates four lamps.	10080	10620	114	120	.97
64E CVP-N	For two 32 watt lamps.	5040	5310	59	120	.50
64E CVP-N-R	For two 32 watt lamps with reflectors.	5040	5310	59	120	.50
T64E CVP-N-R	Tandem two lamp fixtures for 32 watt lamps with reflectors. One ballast operates four lamps.	10080	10620	114	120	.97
259E CVP-N	For two 8', 59 watt lamps.	10032	10324	110	120	.935

STANDARD FEATURES:

- 0° F. ambient starting temperature.
- Easy mount ballast covers.
- High impact acrylic/DR diffuser



FULLY ASSEMBLED FOR F96T12 LAMPS

Catalog Number	Description	System Lumens	Input Watts	Voltage	Amps
296E CVP-N	Electronic ballast for two 60 watt lamps, 60° F. starting temperature.	9328	110	120	.93

Optional Features:

- Mounting -Stainless steel mounting brackets for chain hanging or flush ceiling installation.
- Catalog Number: 4SSB CVP-N for single fixture
- 8SSB CVP-N for tandem fixtures
- Voltage – 277 volts
- Catalog Number: Add 277 to end of fixture catalog number.
- Warranty:**
- Fixtures 2 years
- Lamps 2 years (if ordered with fixtures)
- Ballast 5 years

**RETROLITER® HIGH LIGHT OUTPUT SEAL TIGHT
8' FLUORESCENT LIGHTING FIXTURE
NARROW BODY
FULLY ASSEMBLED WITH ELECTRONIC BALLAST
FOR 59 WATT F96T8 LAMPS**

STANDARD FEATURES:

- 0° F. ambient starting temperature.
- Easy mount ballast covers.
- High impact acrylic/DR diffuser

Catalog Number	Description	System Lumens By Lamp Series		Input Watts	Voltage	Amps
		700	800			
259E-HLO-CVP-N	Two lamp fixture	13566	14042	155	120	1.32



Optional Features:

Mounting - Stainless steel mounting brackets for chain hanging or flush ceiling installation.
Catalog Number: 4SSB CVP-N

Voltage – 277 volts
Catalog Number: Add 277 to end of fixture catalog number.

Warranty:
 Fixture 2 years
 Lamps 2 years (if ordered with fixture)
 Ballast 5 years

**RETROLITER® SEAL TIGHT
8' FLUORESCENT LIGHTING FIXTURES
WIDE BODY
FULLY ASSEMBLED WITH ELECTRONIC BALLAST
FOR T8 LAMPS**

Catalog Number	Description	System Lumens by Lamp Series		Input Watts	Voltage	Amps
		700	800			
264E CVP-W	For four 32 watt lamps.	10080	10620	114	120	.97
T64E CVP-W	Tandem two lamp fixtures for 32 watt lamps. One ballast operates four lamps.	10080	10620	114	120	.97
64E CVP-W	For two 32 watt lamps.	5040	5310	59	120	.50
64E CVP-W-R	For two 32 watt lamps with reflectors.	5040	5310	59	120	.50
T64E CVP-W-R	Tandem two lamp fixtures for 32 watt lamps with reflectors. One ballast operates four lamps.	10080	10620	114	120	.97
259E CVP-W	For two 8', 59 watt lamps.	10032	10324	110	120	.935

STANDARD FEATURES:

- 0° F. ambient starting temperature.
- High impact acrylic/DR diffuser



FULLY ASSEMBLED FOR F96T12 LAMPS

Catalog Number	Description	System Lumens	Input Watts	Voltage	Amps
296E CVP-W	Electronic ballast for two 60 watt lamps, 60° F. starting temperature.	9328	110	120	.93

Optional Features:

- Ballast Covers:** Easy mount ballast covers with ¼ turn fasteners
- Voltage:** 277 volts, Catalog number: Add 277 to end of fixture catalog number.

Warranty:

- Fixtures:** 2 years
- Lamps:** 2 years (if ordered with fixtures)
- Ballast:** 5 years

RETROLITE CORPORATION OF AMERICA / HATBORO, PA 19040
Manufacturers of energy efficient, low maintenance lighting products Since 1982
TOLL FREE PHONE 888-717-3688 / PHONE 215-443-9370 / FAX 215-675-9004

REPLACEMENT BALLASTS FOR COMPACT FLUORESCENT LAMPS

CATALOG NUMBER	DESCRIPTION	AMBIENT STARTING TEMPERATURE
13BTT-A	13 watt electromagnetic enclosed, thermally protected.	14° F.
28BQT-O	28 watt electromagnetic open core, thermally protected.	-20° F.
40HL EB-I	Electronic for one 40 watt, high lumen long lamp	0° F.
240 HL EB-I	Electronic for two 40 watt, high lumen long lamps	0° F.

ELECTRONIC FOR T8 FLUORESCENT LAMPS

CATALOG NUMBER	DESCRIPTION	AMBIENT STARTING TEMPERATURE
32EB-I	For one 32 watt lamp	0° F.
232EB-I	For two 32 watt lamps	0° F.
432EB-I	For four 32 watt lamps	0° F.
259EB-I	For two 8', 59 watt lamps	0° F.
232 EB-HLO-I	For two 32 watt lamps, for high light output	0° F.
259EB-HLO-I	For two 8', 59 watt lamps, for high light output	0° F.

ELECTRONIC FOR F96T12 FLUORESCENT LAMPS

CATALOG NUMBER	DESCRIPTION	AMBIENT STARTING TEMPERATURE
260EB-I	For two 8' , 60 watt lamps	60° F

ELECTROMAGNETIC FOR F40T12 ENERGY SAVER FLUORESCENT LAMPS (34 WATT)

CATALOG NUMBER	DESCRIPTION	AMBIENT STARTING TEMPERATURE
40MB	For one lamp	60° F
240MB	For two lamps	60° F
240 MBPB	For two lamps, premium ballast to maximize lamp life and light output	60° F

LAMPS FOR RETROLITER® SEAL TIGHT FLUORESCENT FIXTURES

LAMP	COLOR TEMPERATURE	LUMENS	AVERAGE LAMP LIFE - HOURS
F32T8/730	3000K	2800	20,000
F32T8/735	3500K	2800	20,000
F32T8/741	4100K	2800	20,000
F32/750	5000K	2650	20,000
F32T8/765	6500K	2750	20,000

LAMP	COLOR TEMPERATURE	LUMENS	AVERAGE LAMP LIFE - HOURS
F32T8/827	2700K	2580	20,000
F32T8/830	3000K	2950	20,000
F32T8/835	3500K	2950	20,000
F32T8/841	4100K	2950	20,000
F32T8/850	5000K	2950	20,000
F32T8/830/XP	3000K	3000	24,000
F32T8/835/XP	3500K	3000	24,000
F32T8/841/XP	4100K	3000	24,000

LAMP	COLOR TEMPERATURE	LUMENS	AVERAGE LAMP LIFE - HOURS
F96T8/730	2700K	5700	15,000
F96T8/735	3500K	5700	15,000
F96T8/741	4100K	5700	15,000

RETROLITE CORPORATION OF AMERICA / HATBORO, PA 19040
Manufacturers of energy efficient, low maintenance lighting products Since 1982
TOLL FREE PHONE 888-717-3688 / PHONE 215-443-9370 / FAX 215-675-9004

800 SERIES

LAMP	COLOR TEMPERATURE	LUMENS	AVERAGE LAMP LIFE - HOURS
F96T8/830	3000	5900	15,000
F96T8/835	3500	5900	15,000
F96T8/841	4100	5900	15,000
F96T8/850	5000	5900	15,000

4' 34 WATT T12 LAMPS

CARTON QUANTITY 30

LAMP	COLOR TEMPERATURE	LUMENS	AVERAGE LAMP LIFE - HOURS
F40CW/SS	4100K	2700	20,000
F40WW/SS	3000K	2750	20,000

8' 60 WATT T12 LAMPS

CARTON QUANTITY 15

LAMP	COLOR TEMPERATURE	LUMENS	AVERAGE LAMP LIFE - HOURS
F96T12/CW/SS	4100K	5300	12,000
F96T12/WW/SS	3000K	5500	12,000

28 WATT 15MM QUAD TUBE COMPACT FLUORESCENT

CARTON QUANTITY 50

LAMP	COLOR TEMPERATURE	LUMENS	AVERAGE LAMP LIFE - HOURS
CF28QT/828	2800K	1600	10,000
CF28QT/850	5000K	1600	10,000

13 WATT TWIN TUBE COMPACT FLUORESCENT

CARTON QUANTITY 50

LAMP	COLOR TEMPERATURE	LUMENS	AVERAGE LAMP LIFE - HOURS
CF13DT/827	2700	800	10,000
CF13DT/830	3000	800	10,000
CF13DT/835	3500	800	10,000
CF13DT/841	4100	800	10,000
CF13DT/850	5000	800	10,000

RETROLITE CORPORATION OF AMERICA / HATBORO, PA 19040

Manufacturers of energy efficient, low maintenance lighting products Since 1982

TOLL FREE PHONE 888-717-3688 / PHONE 215-443-9370 / FAX 215-675-9004

RETROLITER® SEALTIGHT FLUORESCENT FIXTURES REPLACEMENT PARTS

FOR 2', 4', AND 8' FIXTURES

CATALOG NUMBER	DESCRIPTION
ACL-2N	2' high impact acrylic/DR diffuser for narrow body
ACL-4N	4' high impact acrylic/DR diffuser for narrow body
ACL-4W	4' high impact acrylic/DR diffuser for wide body
ACL-8N	8' high impact acrylic/DR diffuser for narrow body
ACL-8W	8' high impact acrylic/DR diffuser for wide body
CVP-2SN	2' narrow body fiberglass housing and high impact acrylic/DR diffuser with four lens clips
CVP-4SN	4' narrow body fiberglass housing and high impact/DR diffuser with six lens clips
CVP-4SW	4' wide body fiberglass housing and high impact/DR diffuser with six lens clips
CVP-8SN	8' narrow body fiberglass housing and high impact/DR diffuser with twelve lens clips
CVP-8SW	8' wide body fiberglass housing and high impact/DR diffuser with twelve lens clips
LC-248	Lens clip for 2', 4' or 8' fiberglass housing
MBLH-E	Medium bi-pin lampholder for electronic ballast – includes contact jumper
MBLH-M	Medium bi-pin lampholder for magnetic ballast
BCC-48	Ballast cover clip for 4' or 8' fixture
CVP-RFL	Specular reflector for one lamp 4' fixture (two lamp 8' fixture requires two)
SLLH-2	Lampholder set for fixture with slimline lamps

FOR COMPACT FLUORESCENT LAMP FIXTURES

CATALOG NUMBER	DESCRIPTION
CVT-3-L6	6-1/4" long, clear polycarbonate threaded cylinder diffuser, outside prisms
CVT-4-L6	6-1/4" long, clear polycarbonate threaded cylinder diffuser, smooth outside
CVT-3-L7	7-1/2" long, clear polycarbonate threaded cylinder diffuser, outside prisms
CVT-4-L7	7-1/2" long, clear polycarbonate threaded cylinder diffuser, smooth outside

RETROLITE CORPORATION OF AMERICA / HATBORO, PA 19040
Manufacturers of energy efficient, low maintenance lighting products Since 1982
TOLL FREE PHONE 888-717-3688 / PHONE 215-443-9370 / FAX 215-675-9004

THE RETROLITER® HANG STRAIGHT™ HEAT LAMP FIXTURE

The Only One Specially Designed For Safe, Economical
Use In Swine Operations

Durable Enough to be Backed by a Two Year Warranty

U.L. Listed To U.S. and Canadian Safety Standards

Features:

- Adjustable hanger is attached to the 9 foot power cord for easy mounting and height adjustment.
- Lampholder is fully enclosed to protect against breakage and water penetration.
- Screw shell and center contact of lampholder are nickel plated to prevent bonding to heat lamp screw base. This eliminates separation of the glass from the screw base during relamping.
- Shock absorbing non-metallic shade/enclosure will not dent or corrode and reduces the risk of damage to the heat lamp.
- A portion of the heat lamp's light is diffused through the opaque shade/enclosure to provide supplemental illumination.

Patent Pending



**Forget about fixture repair or replacement
costs for at least two years.**

Buy RETROLITER®

MODEL NUMBER PACKAGING
HSHLF 16/CARTON

RetroLite Corporation of America

Manufacturers of Energy Efficient, Low Maintenance Lighting Products Since 1982

320 Jacksonville Road Hatboro, PA 19040
215-443-9370 Fax 215-675-9004 e-mail: rlites@aol.com

Toll Free 888-717-3688

**IF PIGLETS COULD TALK, WOULDN'T THEY ASK FOR THE
COMFORT ZONE 20™ HEAT LAMP?**



**COMFORT ZONE 20 IN THE HANG
STRAIGHT HEAT LAMP FIXTURE**



**STANDARD 175 WATT HEAT LAMP
IN A GENERIC HEAT LAMP FIXTURE**

RetroLite Corporation of America

Manufacturers of Energy Efficient, Low Maintenance Lighting Products Since 1982

41 Bonair Drive Warminster, PA 18974

215-443-9370 Fax 215-675-9004 e-mail: rlites@aol.com

Toll Free 888-717-3688

Compare the performance of the 175 watt Comfort Zone 20™ with a standard lamp.



THE COMFORT ZONE 20™ HAS BEEN SELECTED BY THE AMERICAN SOCIETY OF AGRICULTURAL ENGINEERS TO RECEIVE AN AE 50 AWARD FOR THE 2004 COMPETITION.



A New 175 watt Par 38 Heat Lamp With Unmatched Performance For Swine Houses

RETROLITER® LAMP GUARD

A retrofit enclosure system for plastic or porcelain keyless socket fixtures.

- ➔ Maintain full light output by preventing dust buildup on hard to clean lamps.
- ➔ Avoid corrosion to fixture sockets caused by moisture from humidity or misting systems.
- ➔ Eliminate glass fragments that result from broken lamps and are a hazard to livestock and production personnel.

The polycarbonate lamp enclosure is easily cleaned, highly resistant to breakage and prevents moisture and dust from reaching the lamp and fixture socket.

Interchangeable clear or colored enclosures are available in lengths to accommodate all types of lamps. Incandescents, spiral fluorescents and twin tube fluorescents with screw-in ballasts can all be used.

If a red, green or blue light is desired, a colored enclosure can be used with a regular lamp. This eliminates the need to purchase a more expensive colored lamp.

Quick and easy to install. No need to remove the fixture. Use only a screw driver to mount the Retroliter® adapter to the keyless fixture, then screw on the enclosure.

Without Lamp Guard Protection



With Lamp Guard Protection



ORDERING INFORMATION

CATALOG NUMBER	DESCRIPTION
LGA	Lamp Guard Adapter
LGA-E5C*	5-1/4" clear enclosure**
LGA-E6C*	6-1/4" clear enclosure**
LGA-E7C*	7-1/2" clear enclosure**

* For colors substitute the appropriate letter for "C"

B - Blue, G - Green, R - Red

Other colors can be had by special order.

** Enclosure length exclusive of threaded neck.

RetroLite Corporation of America

Manufacturers of Energy Efficient, Low Maintenance Lighting Products Since 1982
41 Bonair Drive Warminster, PA 18974 • Ph. 215-443-9370 • Fax 215-675-9004
e-mail: rlites@aol.com • web site www.retrolite.com

Toll Free 888-717-3688